

SASWAT INFRASTRUCTURE
PVT LTD



SASWAT HOMES 

Homes for now, homes for ever

Welcome to a life you
dreamt of at

“Bhubaneswar”

4th Ranked
livable capital
city in India

A ‘ Tier 2 ’
City

Top
Smart City
in INDIA

Sports
Capital of
INDIA

Top
Educational
Facilities

Best
Health care
Facilities

Smooth
Connectivity
within & outside

be a part of a burgeoning city, that offers everything.

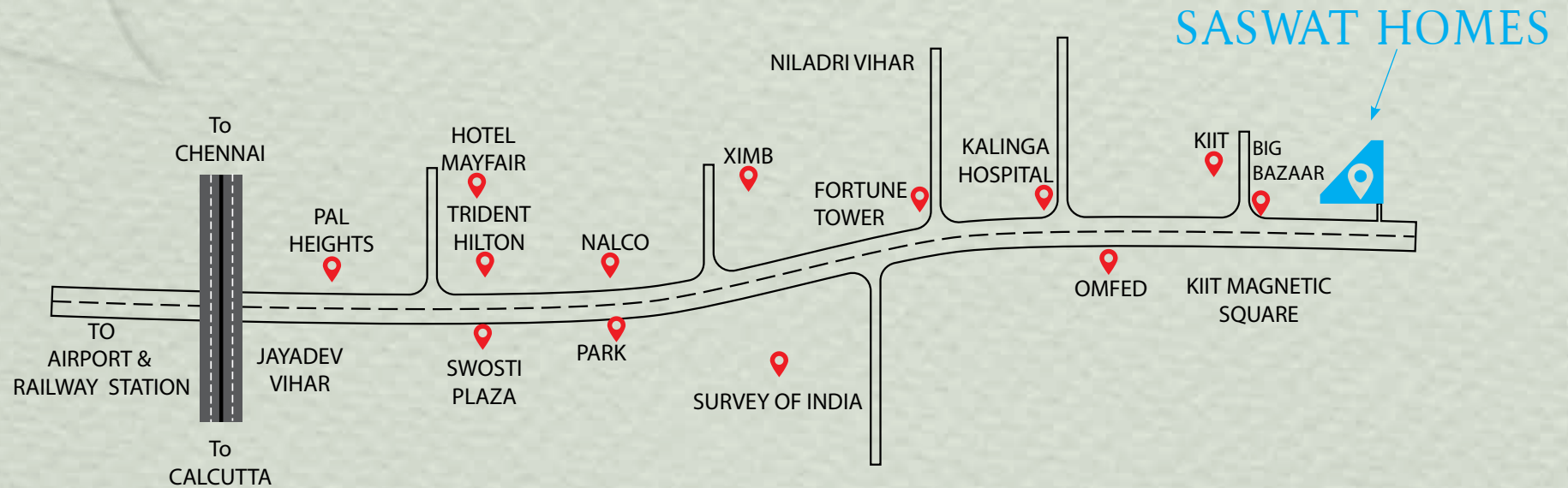




Welcome to
your
DREAM HOME

SASWAT HOMES, the first of its kind built by SASWAT INFRASTRUCTURE PVT. LTD. having an objective to provide a home to live, a place to enjoy, an environment to feel, a tangible dream to touch. SASWAT HOMES, your home, where you can fit, relax, enjoy, play and have a hygienic atmosphere, natural environment and moreover a cheerful life to live in. Get ready to move in, just select your home and stay immediately. Explore more to decide for your new home.

Location Map



Healthcare

CARE Hospital	: 5 min
Utkal Hospital	: 5 min
Aditya Aswini Hospital	: 5 min

Educational institutes

DAV School	: 5 min
SAI International School	: 10 min
ODM School	: 10 min
VEM School	: 10 min
KIIT International School	: 15 min

Scan for more



Super special and significant

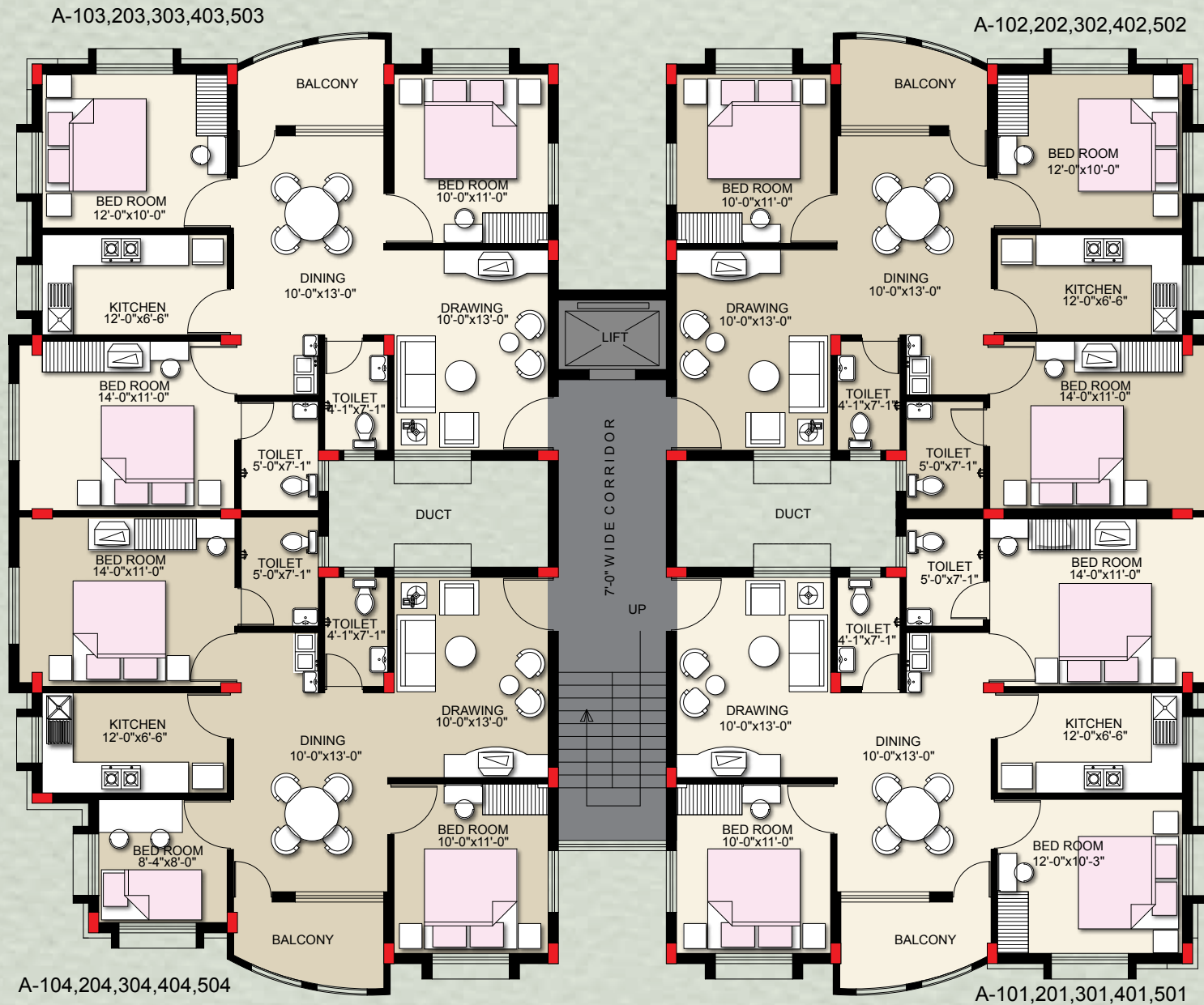
SASWAT HOMES is a multistoreyed Housing complex approved by BDA. The complex is surrounded by numbers of residential complexes with excellent centres for education viz KIIT, SILICON, DAV School, Sai International & Xaviers International etc at nearby locality. Malls & market complexes like Big Baazar are at walking distance while Hospitals like Apollo, Care, Utkal & Kalinga,

are at just minutes' distance. IT Houses like Nalco, Infosys, TCS & Wipro and hotels such as Mayfair Lagoon, Trident Hilton, Swosti Plaza and Tata Ginger are at 10minutes distance. The complex is situated at a very significant location on Patia with all weather round the clock communication facilities.

Layout Map



BLOCK (A)

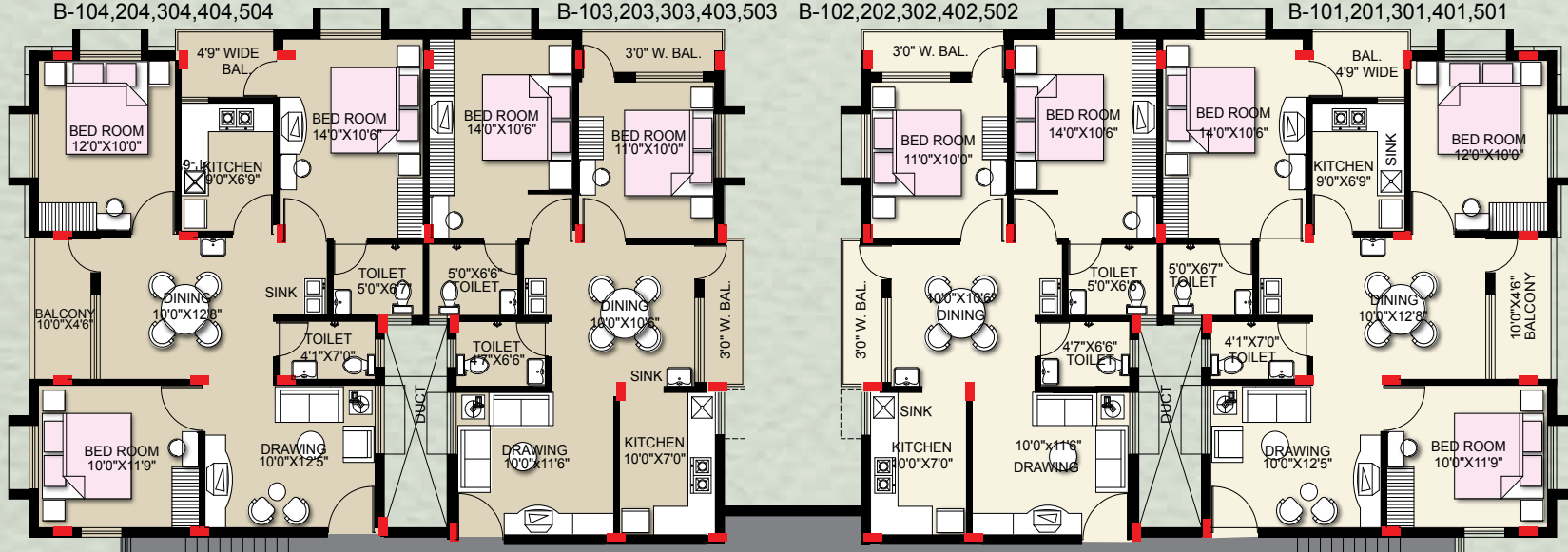


BLOCK (B)

B-104,204,304,404,504

B-103,203,303,403,503 B-102,202,302,402,502

B-101,201,301,401,501



6.0' WIDE CORRIDOR

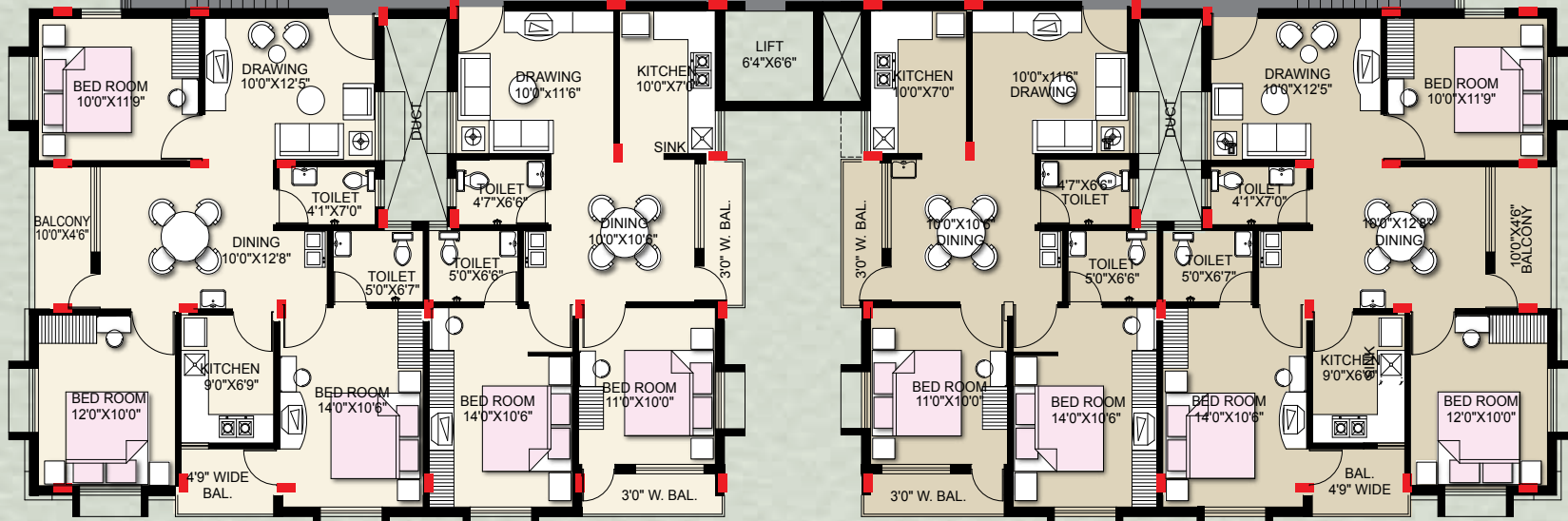
6.0' WIDE CORRIDOR

B-105,205,305,405,505

B-106,206,306,406,506

B-107,207,307,407,507

B-108,208,308,408,508



LIFT
6'4"X6'6"

BLOCK (C)

C-108, 208, 308, 408, 508

C-107, 207, 307, 407 507

C-106, 206, 306, 406, 506

C-105, 205, 305, 405, 505



C-109, 209, 309, 409, 509

C-110, 210, 310, 410, 510

C-104, 204, 304, 404, 504

C-103, 203, 303, 403, 503

C-102, 202, 302, 402, 502

C-101, 201, 301, 401, 501

Facilities



Project approved by BDA



Community Hall



Intercom facility



Landscaped Garden



Gymnasium



24hr security & CCTV



Children play area



Elevators



Fire fighting Equipment



Sewage Treatment Plant



Generator back up to
all common area
and 400 watt to all flat.



Parking facilities for
2 & 4 wheelers



Green Plantation around the complex



Specification



STRUCTURE:

R.C.C. framed structure with column & beams.



FLOORING:

Vitrified flooring with 4" skirting.



KITCHEN:

Granite platforms with stainless steel sinks having wall tiles up to 2'0" heights



DOORS:

Main doors are of teak wood with lock.

All inside doors are flush doors with sal wood frame.



WINDOWS:

Powder coated aluminium sliding windows with safety M.S. grills



BATHROOMS:

Cp fittings of Generic brand.

Vitrified flooring tiles & wall tiles upto 7 feet height & Geyser point in toilet.



ELECTRICAL:

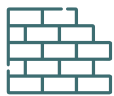
Wires of generic brand with modular electrical switches.

All materials are ISI marks.



PAINTS:

Paint with Putty (inside) weather coat (outside).



WALLS:

8" Exterior and 5" interior walls with fly ash brick.



BOUNDARY WALLS:

8" heights on all sides of premises with M.S. Grill gate.





Promoter



SASWAT INFRASTRUCTURE PVT LTD

627, Saheed Nagar, Bhubaneswar.

Phone : 9777149900, 9777249900

E-mail : sales@saswatinfrastructure.com

www.saswatinfrastructure.com

The brochure is not a legal document. It has been produced for the general promotion of the development and for no other purpose. All information contained in this brochure is taken from design intent material and may be subjected to further design development. These details do not form any / part of any contract and whilst every effort has been made to ensure their accuracy, can't be guaranteed and intending purchasers should not rely on them as statements or representation of facts.